

TENSION LOADCELL

USES

Mobile and tower cranes
Check weighing
Tension measurement
Construction operations
Testing

FEATURES

Light weight aluminium body for ease of transportation and installation.

Battery life: Active- not less than 70 Hrs

Battery Type: Link- 2 x type AA

Handheld- 4 x type AA

"Power on" system test and calibration check.

Illuminated 15mm digits

Operating Frequency: 2.4GHz

Proof Load: 200% Working Load Limit
(150% for 55t and above)

Ultimate Load: 7 Times Working Load Limit

Ambient Temp: -10°C to +40°C

Accuracy: $\pm 1\%$ of ACTUAL Reading

Radio: Built in compliance with:

U.S.A. :-FCC P14-TDK-BTISM

EURO :-CE 0700

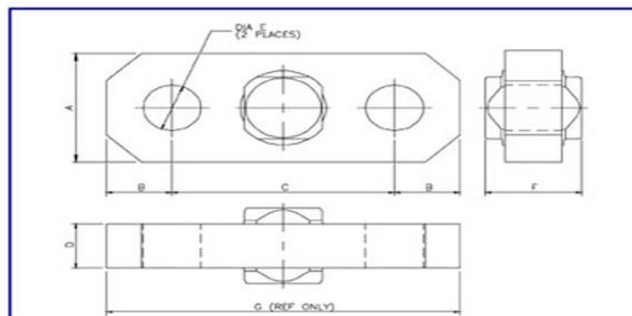
Range: Not less than 100m under normal conditions

Link: Weatherproofed to IP65

Push Button Tare

Peak Hold

Push button Unit Conversion (T,kg,lb,T_r,T_s)



Load capacity (tonnes)	A	B	C	D	ØE	F	G
2	100	47	166	34	28	74	260
6.5	100	47	166	34	28	74	260
12	100	58	176	40	37	80	292
25	125	75	220	55	53	95	370
55	150	108	254	85	73	125	470
120	220	160	320	115	98	155	640

All dimensions in millimeters (unless otherwise stated)

Load Capacity (tonnes)	Link Weight (Approx)	Shackle Crosby G2130 WLL	Size
2	2.5kg	6.5T	7/8"
6.5	2.5Kg	6.5T	7/8"
12	6.5Kg	12.0T	1 1/4"
25	7.0Kg	25.0T	1 3/4"
55	14.5Kg	55.0T	2 1/2"
120	40.0Kg	120.0T	3 1/2"

Link Material - Aluminium Alloy



LIFTING & RIGGING EQUIPMENT FOR ALL LIFTING APPLICATIONS

- ✓ Hoisting Equipment
- ✓ Spreader Beams
- ✓ Winching Equipment
- ✓ Jacking Systems
- ✓ Lifting Equipment
- ✓ Weighing & Testing
- ✓ Lifting Slings
- ✓ Height Safety Gear